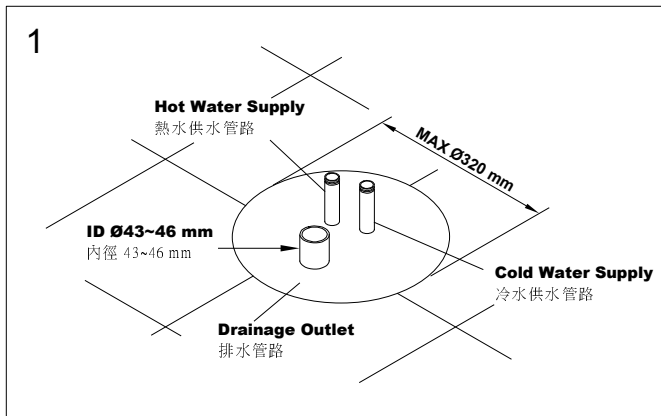


INSTALLATION INSTRUCTIONS

FREESTANDING BASIN

立柱盆龍頭組安裝說明



1. Pre-install the **Cold and Hot Water Supplies** and **Drainage Outlet** in the suggested diameter with Max. 320mm.

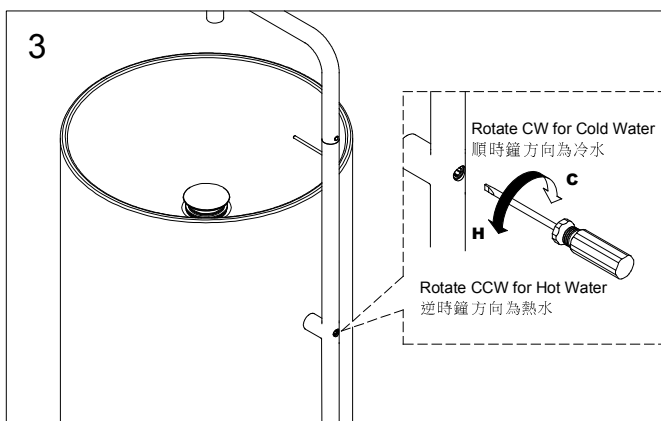
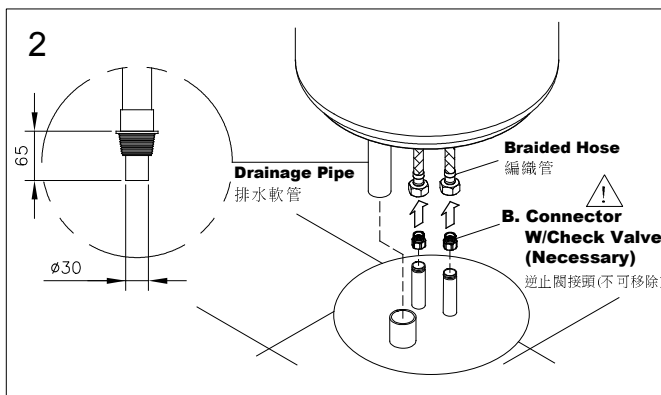
事先預留的進水管路與排水管路，建議涵蓋範圍不可超過320mm。

2. Connect the **Braided Hoses** and **Connector W/Check Valve** to **Cold and Hot Water Supplies** and insert the **Drainage Pipe** to **Drainage Outlet**.

將編織管與逆止閥接頭鎖上到供水管路，並將排水軟管接入排水管路。

3. Adjust water temperature with Slotted Screwdriver. Rotate clockwise to get more cold water; and rotate counterclockwise to get more hot water.

將一字扳手從後方插入最底部即可轉動開關調整冷熱。順時鐘方向為冷水，逆時鐘方向為熱水。



FIXING CONTENTS

組配件內容

