

6874-KA-80CR

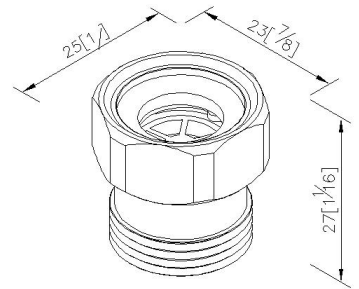
INTRODUCTION:

Connector is used to connect between angle stop/water supply and braided hose. And in order to guarantee the product life, it is completely made of brass to increase the durability.



DESCRIPTION:

- 1.Brass with chrome-plated finish meets the standard of ASTM-SC2.
- 2.Brass material meets JIS 3604 Standard.
- 3.Thread: (M)1/2G*(F)1/2G.
- 4.Washer (L158)/ Dia.12.0xDia.20.0x2.0(NBR).
- 5.With check valve.



unit: mm[inch]

Certification:

Fixing Kits:

- 1.N/A

AWARD: