

INSTALLATION INSTRUCTION

Pressure Balanced Bath & Shower Single Handle

壓力平衡閥單把手淋浴組安裝說明

WARNING: Always turn off hot and cold water by turning the service stops clock-wise before starting. The hole on the wall should be at least 6"(15.2cm) in diameter to have easy remove the guard. The distance from wall to **Balance Valve** center is 2 1/4"-3" (5.7cm~7.7cm)

注意: 開始安裝前, 務必將冷熱供水開關關閉, (順時鐘方向旋轉, 即可關閉開關)。牆上外露的孔徑至少須留直徑6"(15.2cm), 以便於取出保護蓋。牆壁與平衡閥本體中心的距離保持在2 1/4" ~3" (5.7cm~7.7cm)。

1.) Install Valve and Shower Lines

安裝牆壁內本體和淋浴供水管線

Install with "UP" on valve pointing upward. **a/.** Connect hot and cold water supply lines. **b/.** Install shower line · use 1/2" plug place in upper opening if not used · compound or tape all connections. **c/.** Assemble 1/2" tub spout pipe and 1/2" pipe elbow into bottom of the valve.

安裝請參照本體上文字"UP"方向朝上面的指示。 **a/**連接冷熱水供水管線。 **b/**裝置淋浴供水管線, 如果暫時不予使用, 請用1/2"管塞塞住出水口處。 **c/**先將所有接頭塗上管牙膠或包覆止洩帶, 再組裝1/2"水管上端到牆壁內本體上, 同時並組裝1/2"彎頭到1/2"水管的下端。

2.) Install Showerhead

安裝淋浴噴頭

Place **Showerhead Flange** over the thread-end of **Showertube**, apply pipe compound to **Showertube** and 1/2" elbow, install **Showertube** into elbow, Tighten the **Showerhead** by wrench.

將法蘭蓋從淋浴管的接牆壁端套入, 再將其接牆牙端與牆內 1/2" 彎頭內牙, 塗上管牙膠或包覆止洩帶, 接好鎖緊, 最後裝上淋浴頭, 用扳手鎖緊, 即可完成淋浴噴頭安裝。

3.) Install Tub Spout

安裝出水口

Apply pipe compound to **Nipple** and elbow, **Nipple** is to be installed by tool (WARNING: instal 1/2" Nipple at least to extend 1 1/8"(3.5cm) beyond finished wall). Insert the **Spout** and **Spout Plate** over the **Nipple**, and tighten spout set screws with attached **Hexagon Key(2.5mm)**.

塗佈管牙膠或包覆止洩帶在牆內1/2"彎頭內牙及中間接頭的1/2"牙, 使用工具鎖緊(注意: 鎖緊後接頭至少要凸出牆面1 3/8" (3.5cm), 再將面板與出水口組裝上去後, 用2.5mm六角板手將埋頭螺絲鎖緊即可。

4.) Remove the Plastic Guard and set Mixture Temperature Range

移除塑膠保護蓋並設定混合龍頭溫控範圍

First remove the Plastic Guard. **a/.** Make sure the **balance valve /ceramic cartridge** is on position of "off" before adjusting the **thermostatic controller (red ring)**. **b/.** pull out the **thermostatic controller (red ring)**. The "-" and "+" are from cold temperature to mid-high or highest temperature. **c/.** push the red ring down to finish temperature setup process.

首先移除塑膠保護蓋。 **a/**調整溫度調整固定環(紅色套環)之前, 必須確認平衡閥或陶瓷心控制閥在關掉的位置。 **b/** 拔出溫度調整固定環(紅色套環), - 到 + 是由冷溫度到中溫度或高溫度。 **c/** 套押入紅色套環在選定的溫度範圍, 完成調整溫度的步驟。

5.) Turn the Stops on

打開內控冷熱開關

Turn intregal stops · both hot and cold sides · Counter-Clock-Wise to open incoming water flow. Turn handle to full mix position. Let lines flush from tub spout for three minutes · check for leaks · adjust flow -rate by turning intregal stops if water is dripping from showerhead. Now divert water to showerhead and let flush for one full minutes · adjust water mixture temperature as needed.

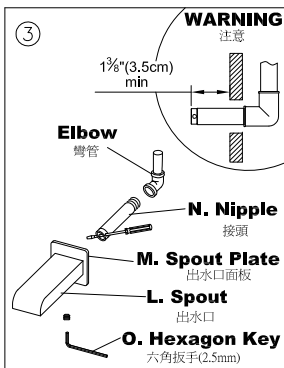
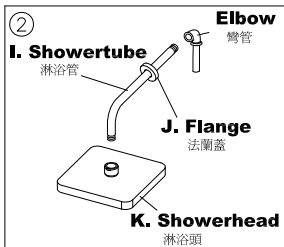
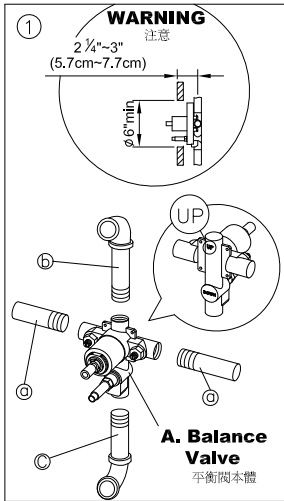
反時鐘方向, 打開內控冷熱左右開關, 進水, 調整中央控制閥把手到全開出水位置, 經下方出水口排放數分鐘後, 再適當使用內控冷熱開關調整出水溫度與出水量, 並檢查上方噴頭噴灑的情況, 及出水口切換開關功能。

6.) Assemble Faceplate and Handle

組合面板與把手

a/. Screw **Adaptor** onto **Balance Valve**, tighten it. **b/.** Cover the **Faceplate** over the **Balance Valve** onto certain place, then tighten the **Retaining nut** with **Gasket** by hand untill the **Faceplate** exactly close to the wall. **c/.** Fix the **Handle** onto Valve Stem and tighten it with set screw by **Hexagon Key(1/8")**. **d/.** Pull out the diverter lift-stem and insert a tool (as screw driver) into its side-hole prevent it from turning as fig⑥, then tighten the **Knob**.

a/將接頭鎖至平衡閥本體, 使用工具鎖緊。 **b/** 蓋上面板於平衡閥本體, 鎖緊定位螺帽與墊片, 使面板穩固的貼於牆面。 **c/** 安裝把手, 並鎖緊把手側邊的埋頭螺絲, 完成把手安裝。 **d/** 如圖⑥拉出拉桿, 以適當工具插入側孔固定拉桿, 鎖緊拉桿頭, 即可完成安裝。



FIXING CONTENTS

組配件內容

A. Balance Valve (with guard) 平衡閥本體(含保護蓋) 	B. Faceplate 面板 	C. Adaptor 接頭 	D. Gasket 墊片 	F. Handle 把手 	G. Knob 拉桿頭 	I. Showertube 淋浴管 	K. Showerhead 淋浴頭 	L. Spout 出水口 	M. Spout Plate 出水口面板 	N. Nipple 接頭
			E. Retaining nut 定位螺帽 		H. Hexagon Key (1/8") 六角板手 					O. Hexagon Key (2.5mm) 六角板手

